

FEATURES

- Downstream and Upstream DOCSIS Protocol Analysis
- Upstream Burst Constellation and MER Display with MAC Address and SID Display
- Supports TDMA, A-TDMA, and S-CDMA Modulation Formats
- Real-Time Demodulation and Filtering of TDMA & A-TDMA Modulations*
- Local and Remote Modes of Operation via Ethernet
- Tcl and C Callable APIs for Automation and Test Integration
- Supports North America DOCSIS and Euro-DOCSIS
- Drivers for Windows, Linux, or Solaris Operating Systems

APPLICATIONS

- DOCSIS 2.0 Product Development
- DOCSIS 2.0 Certification / Qualification Pretesting and Testing
- DOCSIS 2.0 Production Test
- DOCSIS 2.0 System Integration & Test
- DOCSIS 2.0 Network Testing & Troubleshooting
- VoIP Testing & Integration in DOCSIS 2.0 Networks

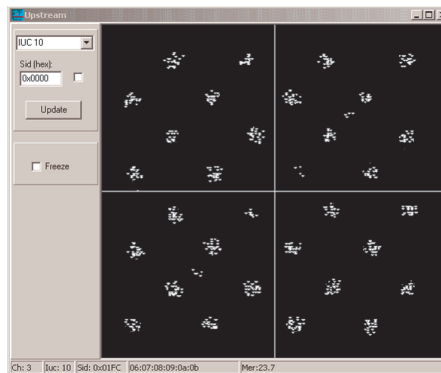
ORDERING INFORMATION

ST-260C DOCSIS & Euro-DOCSIS Dual Tuners
Product includes:
Windows 2000 OS
DOCSIS Test Suite
Tcl & C callable APIs

*S-CDMA processing is performed using a software demodulation algorithm and therefore real-time filtering and demodulation is not supported.

DOCSIS™ 2.0 Protocol Analyzer for DOCSIS 2.0, 1.1, and 1.0 Protocol Analysis

The ST-260C is the industry's only DOCSIS 2.0 protocol analyzer, capable of demodulating upstream burst TDMA, A-TDMA, and S-CDMA signals from cable modems and the downstream MPEG DOCSIS channels from the CMTS. This powerful test analyzer enables functional analysis of DOCSIS networks from RF to IP data for product development, certification, and system deployment.



32-QAM A-TDMA Constellation



UPSTREAM INPUT

Protocol Compliance:
Modulation Format:

RF Frequency Range:
Input Level:
Connector:

DOCSIS / Euro-DOCSIS 1.0, 1.1 and 2.0
PSK, 8-QAM, 16-QAM, 32-QAM, and 64-QAM in TDMA, A-TDMA, S-CDMA (128-QAM in TCM mode)
5 MHz to 65 MHz
0 dBmV (nominal)
"F", 75 ohm

DOWNSTREAM INPUT

Protocol Compliance:
Modulation Format:
RF Frequency Range:
Input Level:
Connector:

DOCSIS / Euro-DOCSIS 1.0, 1.1 and 2.0
64-QAM and 256-QAM
88 MHz to 860 MHz
0 dBmV +/- 5 dB
"F", 75 ohm

MISCELLANEOUS

Chassis:

Powering:
Operating Temperature:
Interface:

Host Requirements:

4RU, 19" Rackmount Compact PCI
WxHxD : 19" x 7" x 12" (48cm x 18cm x 30cm)
110/220 VAC, 50/60 Hz, 350 Watts (max.)
59F to 95F (15C to 35C)
10/100 BASE-T

PC/Laptop with Windows, Linux or Solaris

DOCSIS is a registered trademark of CableLabs.